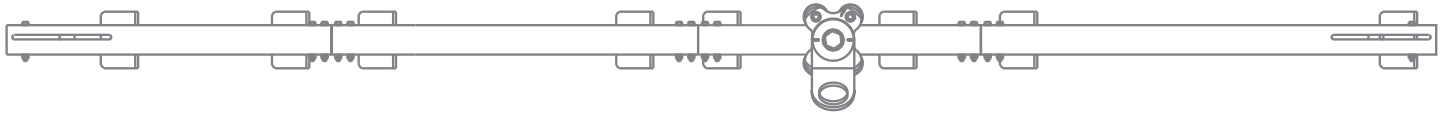




EDGE PROTECT ALU RAIL HORIZONTAL LIFELINE SYSTEM



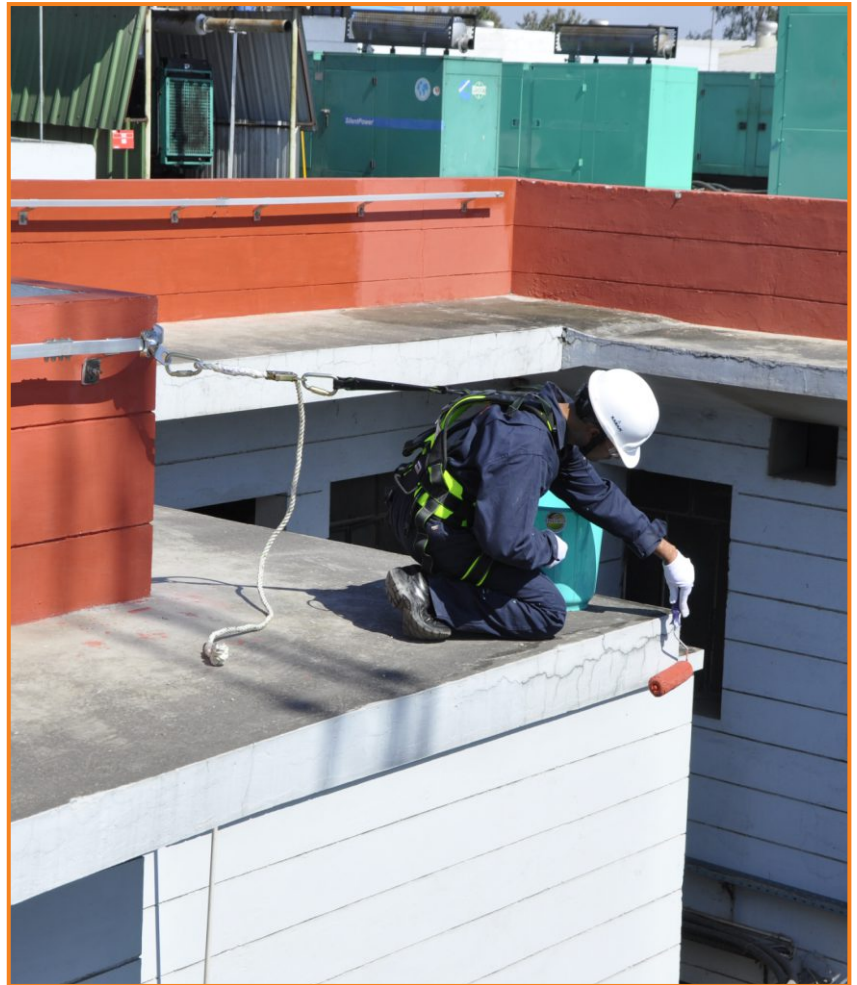
THE HORIZONTAL LIFE LINE PN 5000 IS AN EXCELLENT FALL PROTECTION SYSTEM TO PREVENT FALL OF A WORKER WHILE WORKING ON UNGUARDED AREAS AT HEIGHT.

FALL PROTECTION FOR

- Parapets
- Window Cleaning
- Wind mills and Nacellec
- Domes
- Machines top with unguarded edges.

FEATURE & BENEFITS

- Continuous movement with complete fall protection
- Corrosion free anodized Aluminum rail.
- Four wheel trolley slides on the rail provides restrain against fall.
- Locking jibs at either end for unintentional removal of trolley while in use.
- Curved aluminum rail for easy movement.



Name of Component	1	2	3	4A	4B	5	6A	6B	7
	Alu. Rail Intermediate	Alu. Rail Extremity	Mounting Nut	Wall Mounting Bracket Flush Type	Wall Mounting Bracket with Recess	Junction	Curved Alu. Rail (Outer Wall Mounted)	Curved Alu. Rail (Inner Wall Mounted)	Trolley for Wall
Ref. No of Component	PN 5000 (01)	PN 5000 (02)	PN 5000 (03)	PN 5000 (04)	PN 5000 (05)	PN 5000 (08)	PN 5000 (09A)	PN 5000 (09B)	PN 5000 (12)



SUCCESS UDYOG PVT. LTD.

Registered Office: Office No. 315/316, 3rd floor, City Space, Sr.No.198/1A, Pune Nagar Road, Pune 411014, Maharashtra

Godown : Jadhav warehousing, Gat no. 1338/1, Priyankanagari, Wagholi, Pune – 411207

Off. Tel: 020-40188288/216/244/221-228, Cell-9371919702/9370223873 Fax: 020-40188227/299

Email: sales@successudyog.com Web: www.successudyog.com